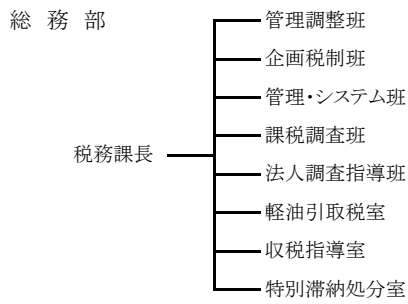


1. 税務機関組織図

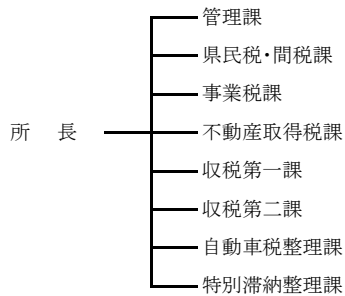
(令和4年11月1日現在)

(1) 本 庁

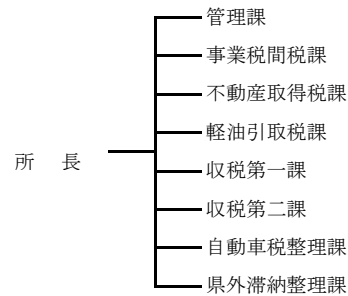


(2) 出先機関

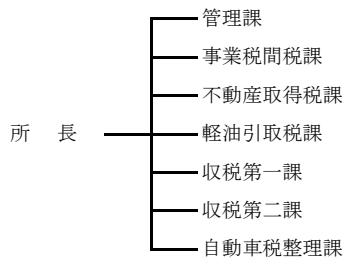
①中央県税事務所



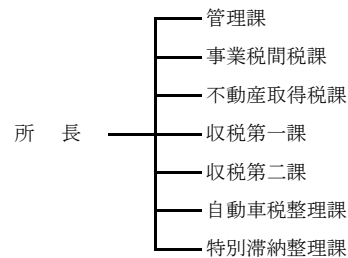
④松戸県税事務所



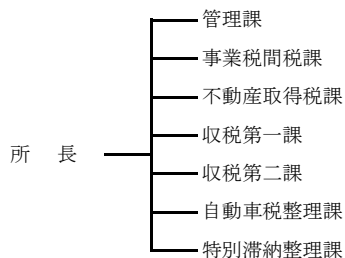
②千葉西県税事務所



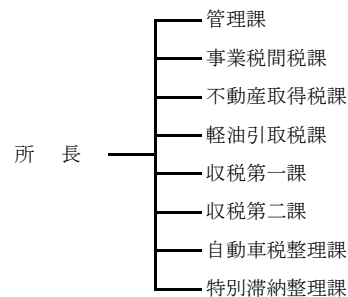
⑤柏県税事務所



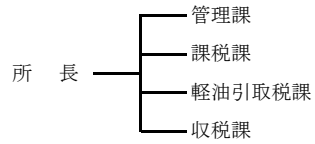
③船橋県税事務所



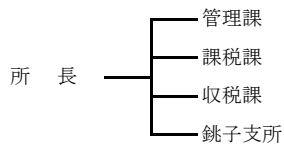
⑥佐倉県税事務所



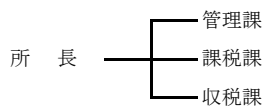
⑦香取県税事務所



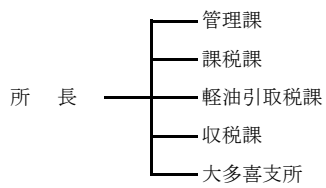
⑧旭県税事務所



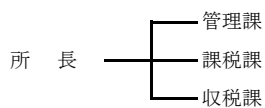
⑨東金県税事務所



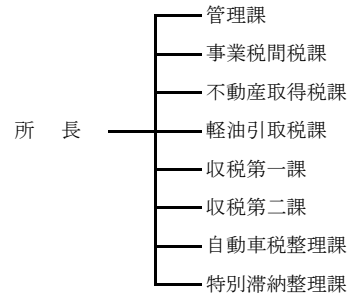
⑩茂原県税事務所



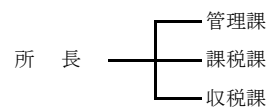
⑪館山県税事務所



⑫木更津県税事務所



⑬市原県税事務所



⑭自動車税事務所

